

Grzegorz Malinowski

Contact info:

grzegorz.ryszard.malinowski@gmail.com

Languages:

English (B2+)

German (A2)

Polish (native)

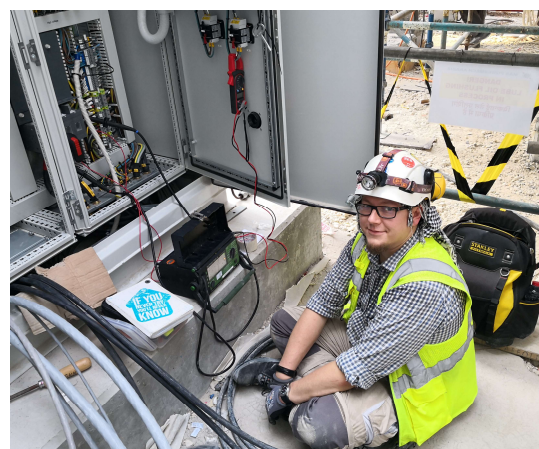
SQL (basic+)



Electrical engineer wit IT experience for banking sector
Electrical commissioning & rail RME technician
NetReveal™ developer with SQL

Experience on systems

- ◆ DC-UPS
- ◆ LV/MV AC ⚡ DC switchboards
- ◆ LV/MV transformers
- ◆ Generator
- ◆ HVAC
- ◆ Fire fighting
- ◆ MV Full Bridge Rectifier™
- ◆ Windows
- ◆ Linux
- ◆ ORACLE SQL developer



Cabinet incoming cables
“meggering”

LV cable fault detecting



Skills

- ◆ Troubleshooting & RCA (Electrical/software)
- ◆ Electrical O&M
- ◆ Basic DCS operation (Alstom Alspa, GE MarkVI)
- ◆ Secondary injection, Meggering, Power Quality Meter,
- ◆ Testing CT/VT (Omicron)
- ◆ PLC: GE F650 & GE MM200, Izaz
- ◆ LV/MV cables fault location
- ◆ WD/SLD/RedKorrex reading.issuing
- ◆ (basic) CAD and (like a boss) PDF.
- ◆ Basic P&ID reading.
- ◆ SAP ERP operation.
- ◆ Microsoft Office package
- ◆ 3D tinkering (tanx.pl)
- ◆ Unity Editor
- ◆ SQL basic+

Grzegorz Malinowski

Contact info:

grzegorz.ryszard.malinowski@gmail.com

Languages:

English (B2+)

German (A2)

Polish (native)

SQL (basic+)



Full work experience

09.2024
- now

SymphonyAI Netreveal

► Product Implementation Engineer

- Modification and changes implementation in NetReveal™ based on Customers requests (AML/CDD, database)
- RedHat/Centos linux file management
- ORACLE SQL data extraction and processing.

09.2024
- now

PKP Energetyka (now: PGE Energetyka Kolejowa)

► Automation engineer / RME

- Rail 3kV DC HSCB (high-speed-breakers) maintenance (Apena-GE WS/BWS),
- Rail Voltage Limiting Devices maintenance (KOLEN),
- MV cables testing (hipot),
- LV&MV damaged cables location (reflectometer, surge),
- MV/LV transformers testing,
- 3kV DC Full Bridge Rectifier™ maintenance,
- isolating equipment testing (voltage sensors, gloves, shoes, rods),
- e²TANGO bay controllers exploitation,
- Test Certificates preparation.

09.2024
- now

Elektromontaż Poznań SA

► Site engineer / commissioning engineer

- Invoices and goods handling (SAP ERP),
- Post-erection/pre-commissioning checkups (Megger/earth fault impedance/protection tests),
- Work organization between subcontractors and Client,
- Protection relays checkup (Izaz),
- Ground fault detection diagnostics in DC circuits,
- LV/MV modifications and recommissioning (interlocks/troubleshooting/RCA),
- Reports/test certificates/RedKorrex issuing,
- Experience on 1970's and 1990's LV distribution boards,
- Outstanding EHS.

05.2015
- 09.2019

ALSTOM Power / GE Power (Warsaw/Dubai)

► Commissioning engineer

Commissioning of equipment and later on maintenance:

- Batteries (Hoppeke),
- DC-UPS (Statron),
- MCC (LV/MV Entelleon/Elektrobudowa/SecoGear),
- Protection relays / PLC (type: Multilin F650/MM300),
- Transformers,
- Generator (GE/Alstom),
- HVAC (Gföllner, Daikin, HiRef),
- Motors (fans, pumps, coal handling),
- Supervision & coordination of subcontractors (LoTo, PTW),
- Witness points with the Client,
- Modification and addons to equipment (on the fly modifications, electrical & logic),
- Turn-over package walkdowns,
- Lead by example in EHS.

12.2012
- 04.2015

Mobile Laboratory for Diagnosis of Transformers (mldt.pl)

► Technician

- Contractor for water content calculation in distribution transformers for Eitel Networks Wiedelka

Grzegorz Malinowski

Contact info:

grzegorz.ryszard.malinowski@gmail.com

Languages:

English (B2+)

German (A2)

Polish (native)

SQL (basic+)



Full experience, continued

12.2012 - 04.2015	Otto-von-Guericke-University ▶ Guest Scientist <ul style="list-style-type: none">• offshore HVDC cables design (Matlab).
12.2012 - 04.2015	Otto-von-Guericke-University ▶ Guest Scientist <ul style="list-style-type: none">• offshore HVDC cables design (Matlab).
12.2012 - 04.2015	Poznań University of Technology ▶ Researcher <ul style="list-style-type: none">• investigating of PD in esters.
12.2012 - 04.2015	Merazet S.A. ▶ Service specialist <ul style="list-style-type: none">• measuring equipment calibration and service (Sonel, Chauvin Arnoux, etc.).

Education

09.2005 - 06.2010	Poznań University of Technology Faculty of Electrical Engineering ▶ Power Engineering, MSc. Eng.
09.2000 - 06.2005	Technical Communication School Poznań (Technikum Łączności) ▶ Technician